

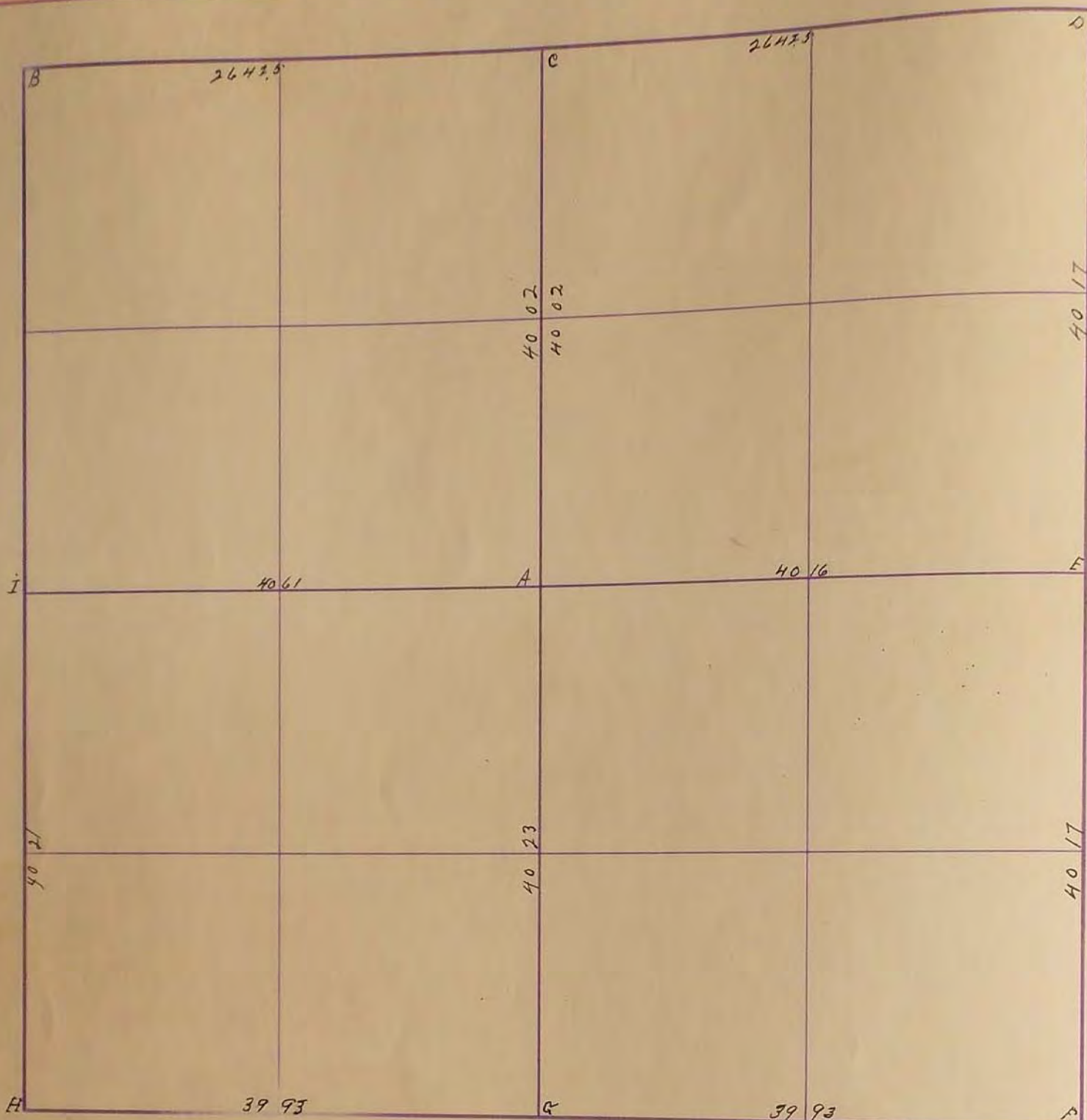
# SURVEYOR'S RECORD

2  
3

Section 2

Township 105

Range 42



May 11-1898

- A. Stone ~~at~~ Pits stone
- B. Gau mound and Pits 2 small stones
- C. " " " " Stone over all stone
- D. " " " "
- E. Stone 12x12x20"
- F. Gau mound and Pits
- G. Stone " "
- H. " " " "
- I. Gau " " "

J.H. Hoolstine-off

May 1890

"F" "concrete stone" R.P. tack in cor. F. P. N.W.

"G" "concrete stone" R.P. tack in cor fence post South 50.7 R.P. tack in 1st fence post West of Brace post S.W. of cor. 57.0 R.P. tack in tel. pole N.W. 84.0

"A" Placed conc. monument over exx2 Hub. March 21, 1973; Placed steel pin in 3" bituminous overlay July 6, 1973; R.P. N&C, Fence post East 51.44'; R.P. Top steel fence post N.E. 63.42'; R.P. steel post N.W. (53' North) 72.92'

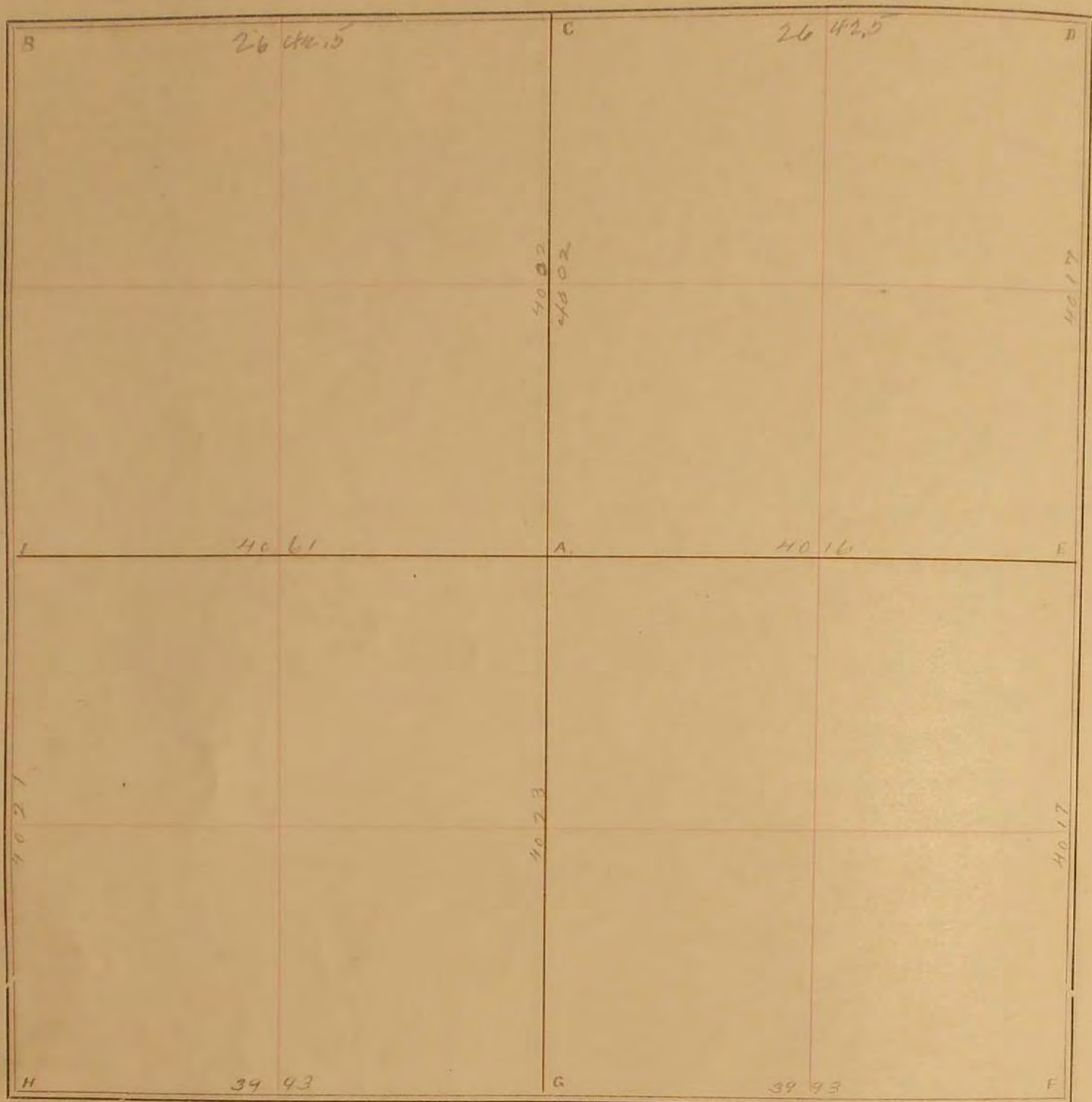
"G" Bridge spike and conc. stone - R.P. Tack in fence post S.W. 57.2'; R.P. tack in cor. fence post south on line 50.4 Placed steel pin in 3" bituminous overlay July 6, 1973; R.P. N&C, Brace P.P., S.E. 55.12; R.P. N&C, P.P., South 48.89

"H" Conc. cylinder with "X"; R.P. spike above April 1971; Placed steel pin in 3" bituminous overlay July 6, 1973; R.P. N&C, T.O.T., N.W. 59.13'; R.P. N&C, Fence Post N. 50.68

"C" See Sec. 35-106-42 "G"

SURVEY No. 37

Section 2 Town 105 Range 12



## FIELD NOTES.

May 11, 1893.

- A. Stone + pits. Stone  
 B. Gov. mound + pits. 2 small stones  
 C. " " " " stone over old stone  
 D. " " " "  
 E. Stone 12" x 12" x 20"  
 F. Gov. mound + pits.  
 G. Stone " "  
 H. " " "  
 I. Gov.

J. W. Woolstenhulme